

Your Safety *Companion*+

Everything you need to know
about Companion+ for work.

Together, we can
make the roads safer.

Contents

- | | | | |
|-----------|-------------------------------------------------------------------------------------------------|-----------|-----------------------------------------------------------------------------------------|
| 01 | What is Companion+
An introduction to Companion+ and why your employer has chosen us | 04 | Data Handling
How we handle your data and privacy within GDPR regulations |
| 02 | How it Works
How Companion+ detects potentially risky driving events to keep you safe | 05 | Data Controls
Features in the app which you can control how data is used |
| 03 | Common Questions
Frequently asked questions or concerns regarding the Companion+ app | 06 | Safety Benefits
Companion+ safety features and how they work to keep you safe |

What is Companion+

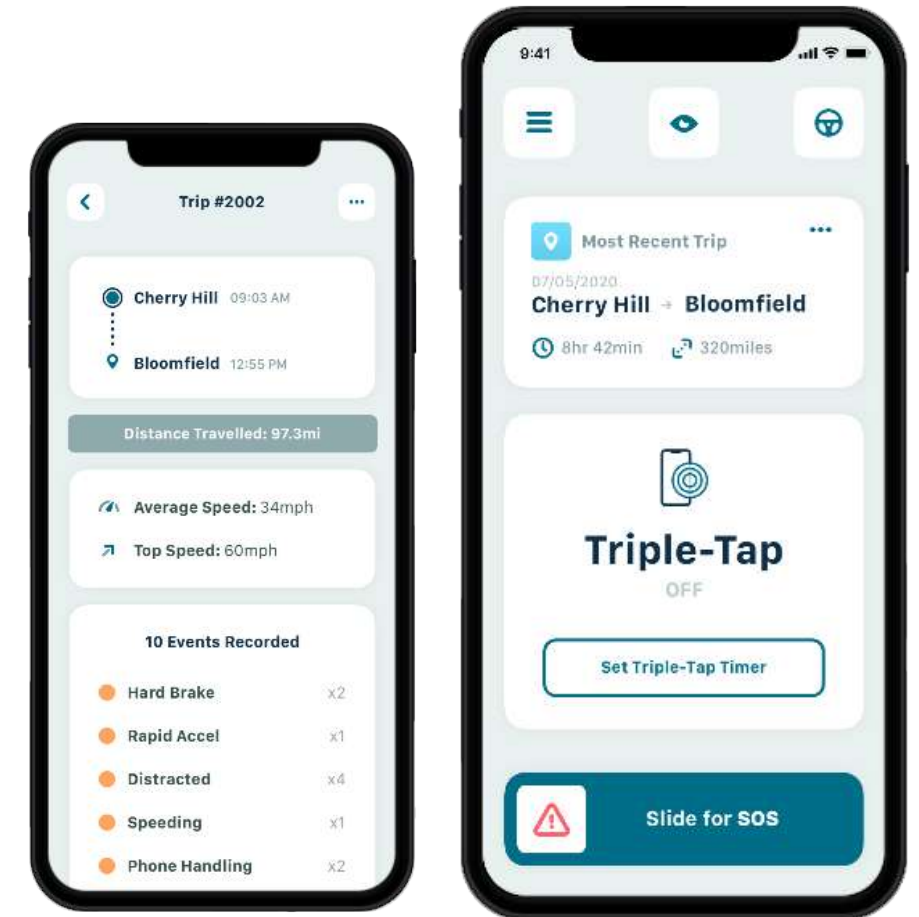
The Mobile Safety App

What is *Companion+*

Companion+ Mobile Safety is a smartphone app that uses the latest technology to provide safety services and safe driving improvement.

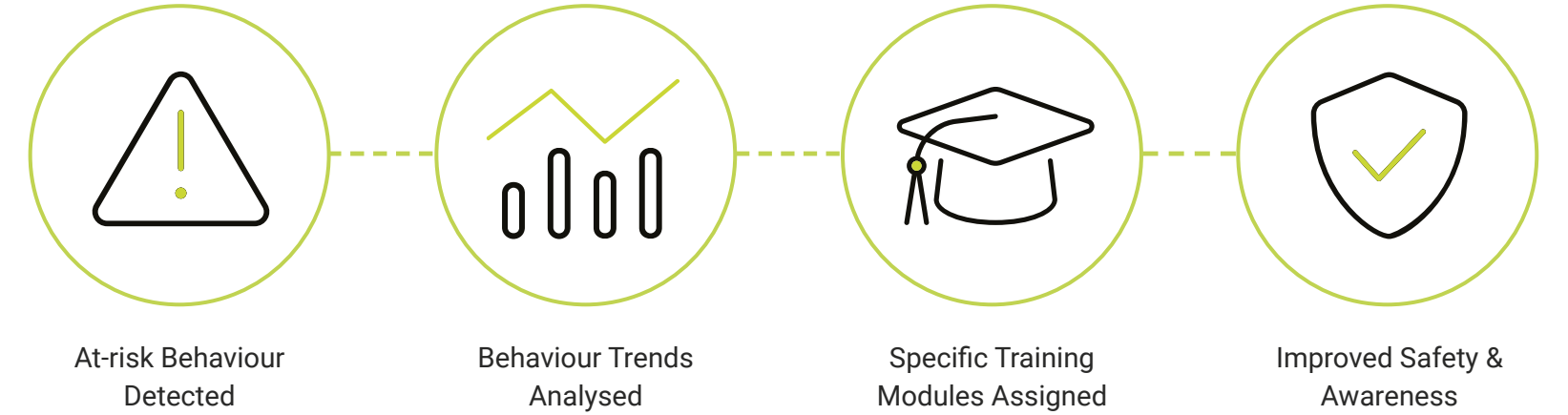
The app supports your development by establishing a driving behavior profile, individual to you. Based on your dynamic profile, you're Triggered Training™ to support you where you need it most. Training is encouraging, supportive and there to improve your safety.

Ensuring you're safe on the road is critical to your company; **you are their most valued asset.**



Powered by sfara

How it Works



How does it work?

The concept is simple. When you drive, Companion+ detects potentially risky driving events using a combination of mobile phone sensors, proprietary algorithms and artificial intelligence (AI).

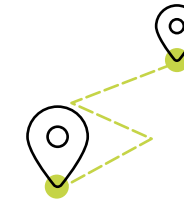
Over time, Companion+ gets to know your driving behaviors and sends you messages and training to improve in areas where you might be at risk. You improve by taking the training and self-adjusting your behaviors.

All without the need to involve your manager.

Powered by
sfara.



Common Questions



Will the app track my location?

We do not track you or your activities. Sfara's edge computing model means that only event notices are transmitted, which meets GDPR data minimization principles.



Will the app drain my device battery?

The Companion+ app uses no more power than a GPS app, such as Waze and Google Maps, and even less power if you leave the app running in the background.



Will the app use my device's data plan?

Companion+ requires very minimal data due to its global patented on-device processing. It only uses data to help issue event notices to help with performance and speed.



Why do I have to download the app?

Your company has introduced Companion+ app for your safety, but also for other road users. Downloading and setting up the app is quick and easy, and could save you from future road risks.



Data Handling

Data Handling

We Respect Your Privacy

Companion+ is purposefully designed to respect driver privacy and comply with GDPR data minimization principles. It will only send event notices, such as a hard braking or phone handling events, to the back-end system.

- ⊗ We don't use in-vehicle cameras or microphones
- ⊗ We don't track your activities
- ⊗ We don't send data when you're off duty
- ⊗ We are not random or biased
- ⊗ We are not punitive

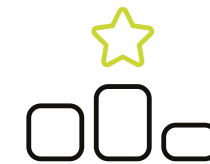


Data Controls



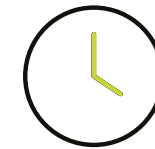
Go Incognito

Use Incognito mode for marking trips that were made on personal time (including breaks). Operated through either a quick-touch start or two schedulers that you can manually set that will mark all trips outside of the work day as Incognito. These trips are not notified to your employer or ADT.



Non-scorable Trip

Companion+ will mark trips as non-scorable when on transportation such as a train or bicycle. You can mark trips as non-scorable yourself, such as when you're a passenger, to ensure accurate attribution.



Work Schedule

You can set your work schedule so no events are detected and reported outside of the work day. If you are on a rotating schedule, you can update your work schedule any time that it changes.



Vacation

You can set your vacation schedule so no events are detected or reported during your leave. Although vacation schedules can't be marked retroactively, you can go into 'Trip Reports' and mark all trips taken during that time period as Incognito.



Safety Benefits

Features & Assistance

Emergency & Safety Assistance

Have security and peace of mind that, no matter where you go, you're never alone with Companion+. The app can connect you with a Safety Coordinator to help with at-risk or emergency situations.

A Safety Co-ordinator can, where necessary:

- ✓ Advocate for you for when your needing extra help
- ✓ Engage emergency services where required
- ✓ Send assistance to exact GPS locations (location shared only in emergency situations)



When would I need to use these safety features?



During and after a collision has occurred



When travelling for work



In unfamiliar areas where you feel unsafe



When you are working alone



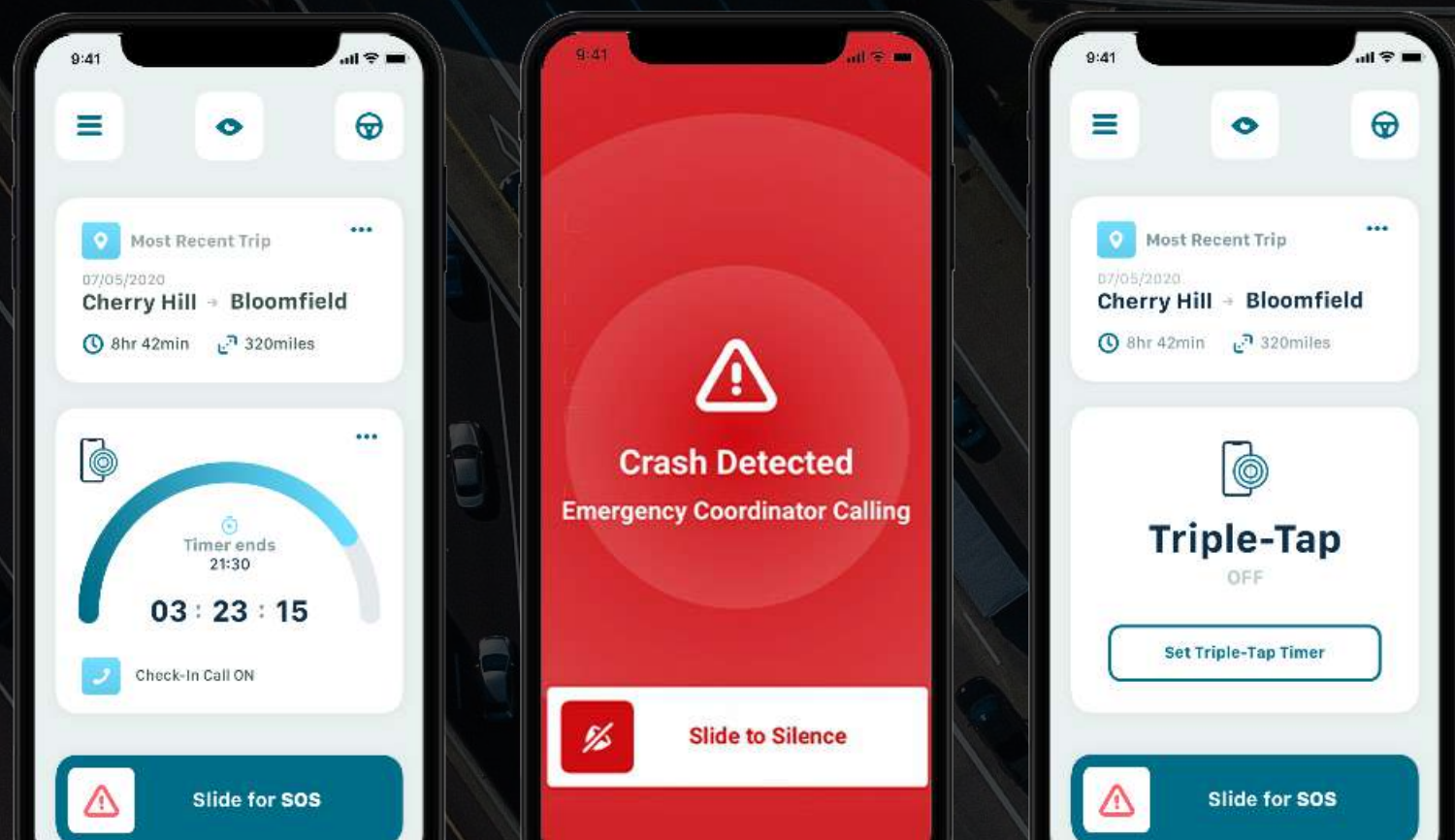
In personal situations (e.g - walking home or uncomfortable environments)

ALL SAFETY SERVICES ARE AVAILABLE 24/7, WHETHER YOU ARE ON OR OFF THE CLOCK*

Some features of Companion+ are not available in some countries, and are subject to company opt-ins

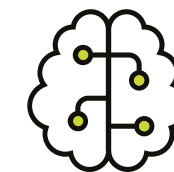
Complete Sphere of Safety™

- AI-Based Crash Detection
- Triple-Tap™
- Check-In Timer
- Manual SOS



AI-Based Detection

The Companion+ Mobile Safety app uses a combination of mobile phone sensors, proprietary algorithms and artificial intelligence (AI) to detect at-risk driving behaviors and patterns.



Triple-Tap™

Triple tap your device to get immediate help when you feel unsafe. The emergency call centre will call you to ensure you are okay, and ask for your PIN.

If you don't answer or your PIN is wrong, emergency services will be immediately be dispatched as they understand you might be in trouble.



Check-In Timer

Set a timer when you need it. If you have not checked in before the timer is finished, the emergency call centre will call you to see if you are okay.

If no response is received, they will dispatch emergency services to your location.



Manual SOS

Be connected to the emergency call centre immediately when in a collision or feeling unsafe, without calling emergency services directly.



Got a Question?

If you have any immediate questions, we recommend speaking to your line manager.
If you are still having problems, please feel free to get in touch.

Contact Us

Our customer service team is available to help with any questions you might have, drop us a message by email or visit our help centre today.

[Visit Help Centre](#)